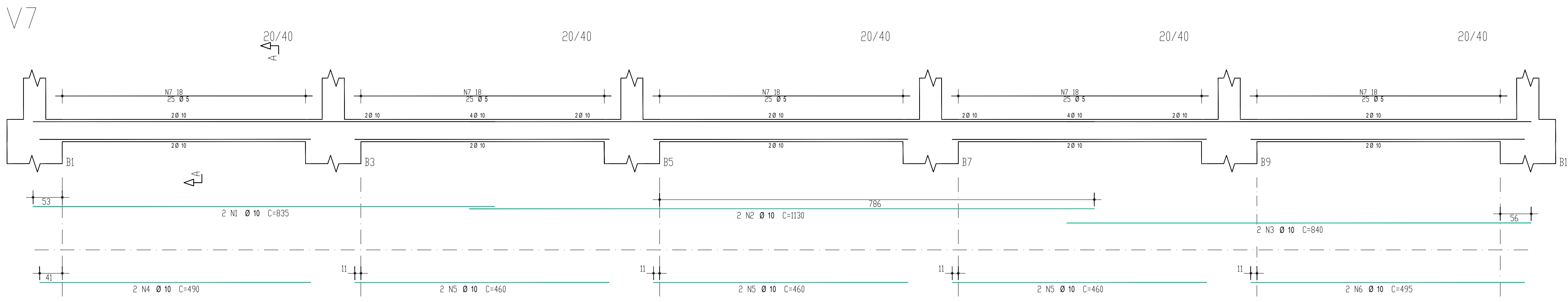
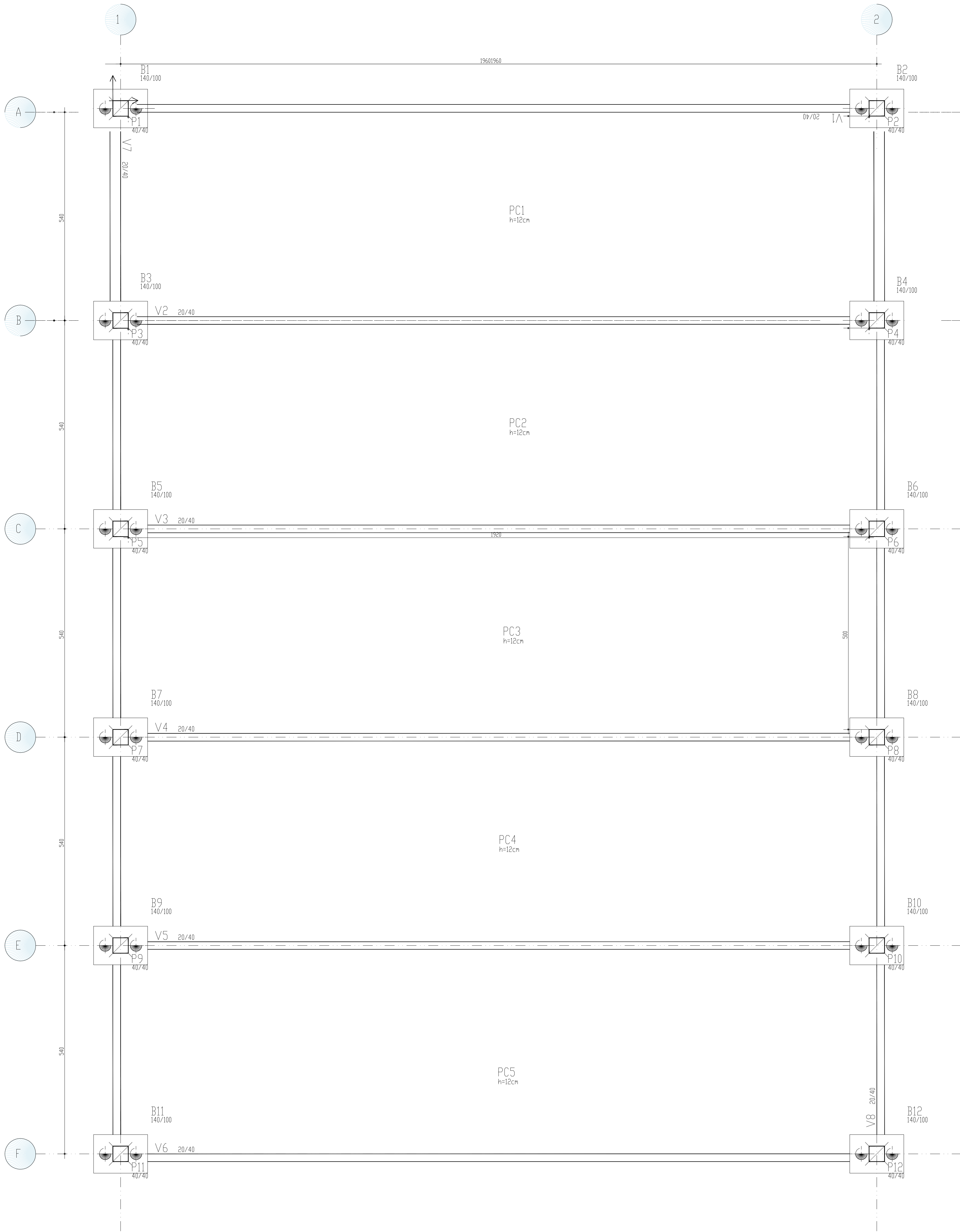


Planta Fundação

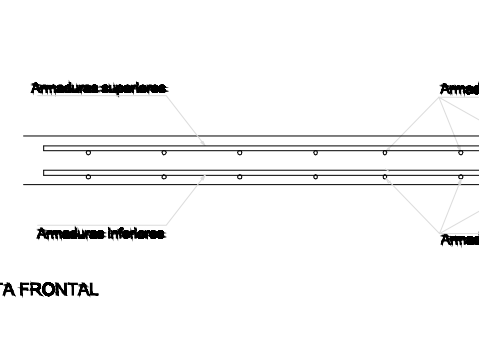
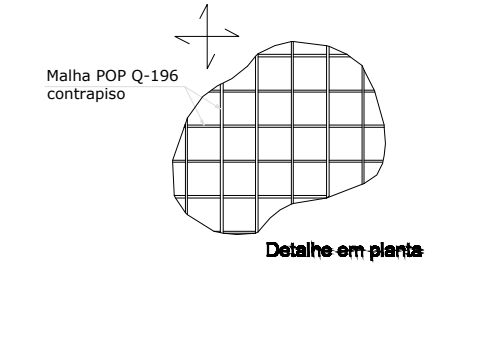
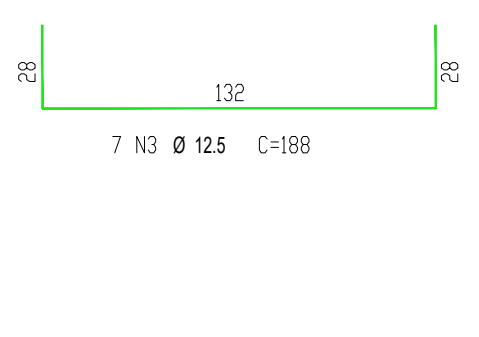
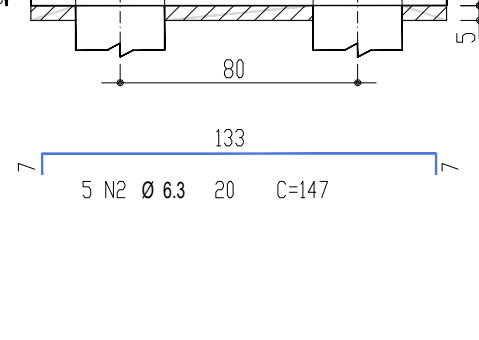
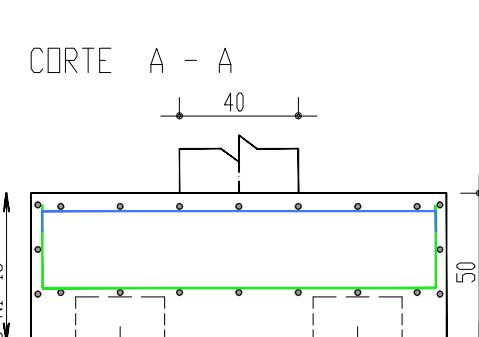
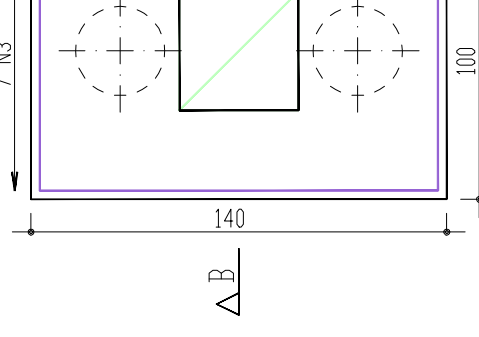
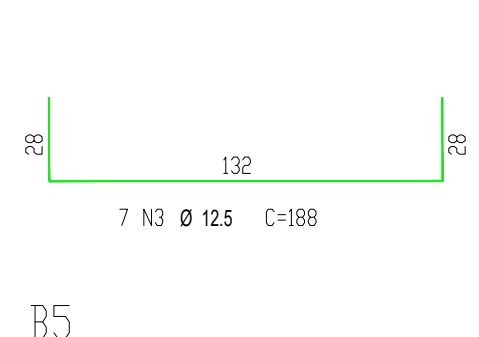
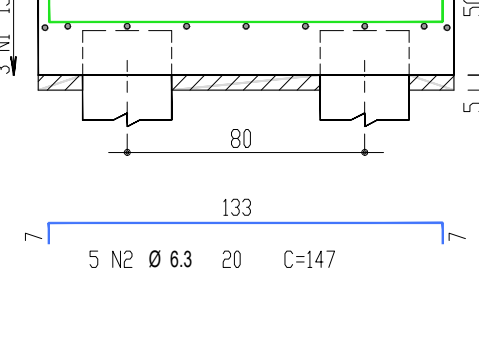
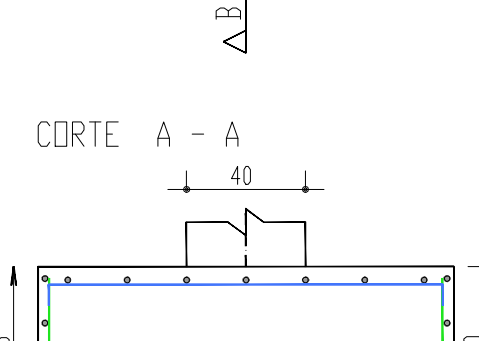
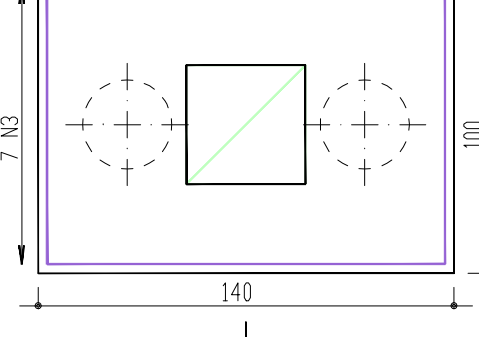
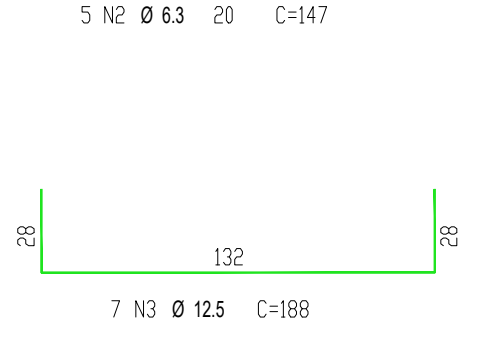
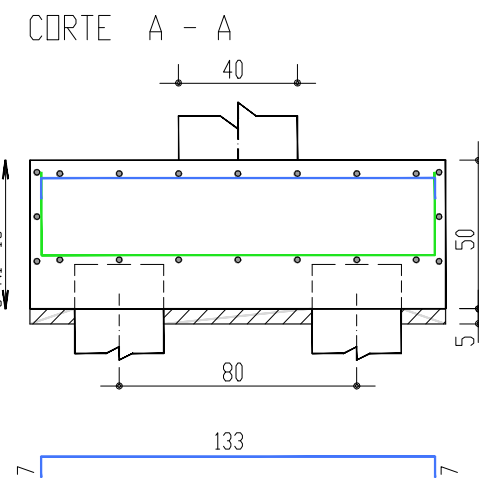
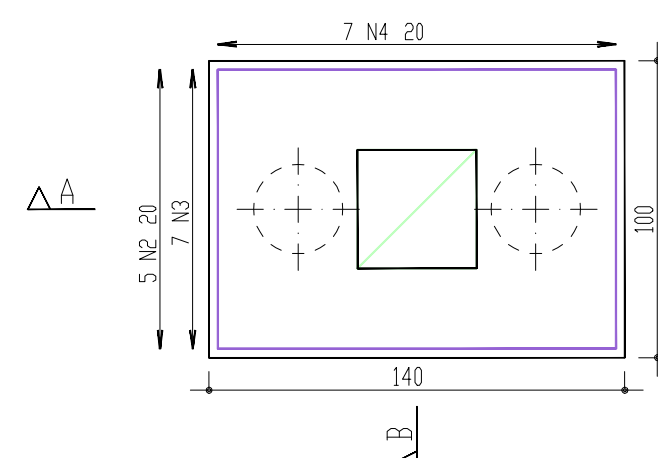
Escala 1:50



Baricentros de pilares		
Pilar	X cm	Y cm
B1	20,0	-280,0
B2	1980,0	-280,0
B3	20,0	-560,0
B4	1980,0	-560,0
B5	20,0	-1040,0
B6	1980,0	-1040,0
B7	20,0	-1520,0
B8	1980,0	-1520,0
B9	20,0	-2000,0
B10	1980,0	-2000,0
B11	20,0	-2480,0
B12	1980,0	-2480,0

B1 ESCALA 1:25

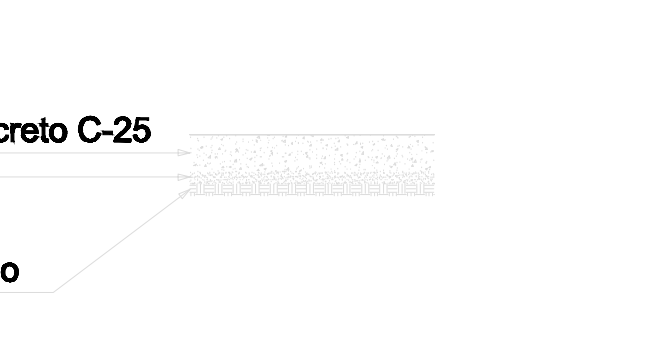
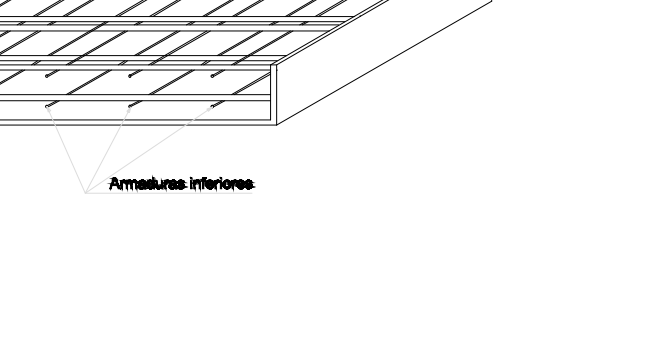
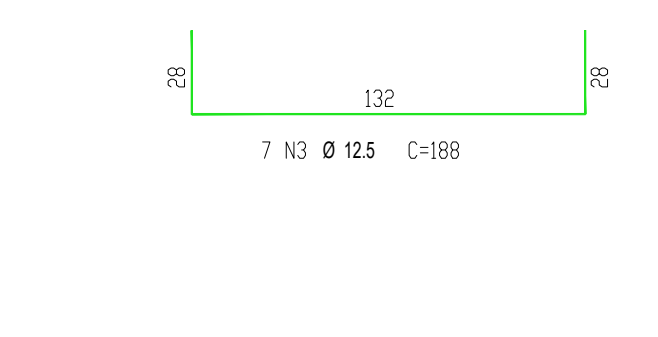
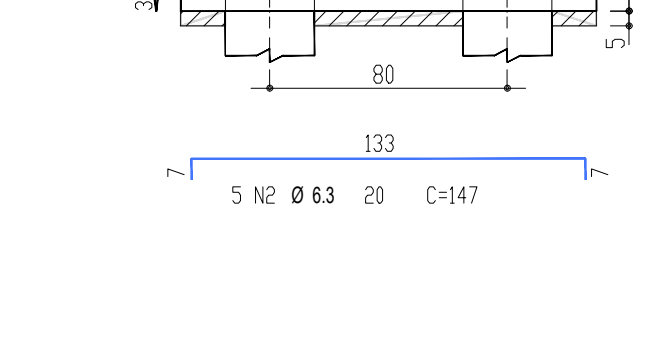
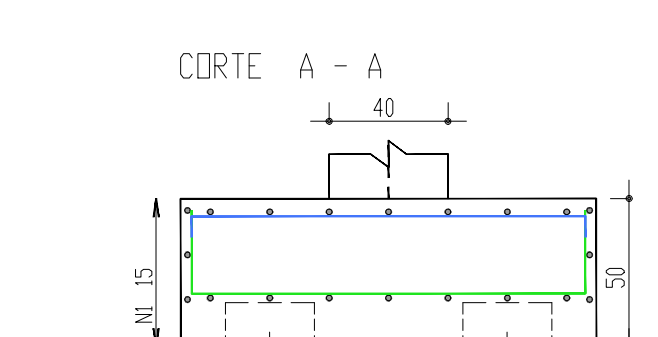
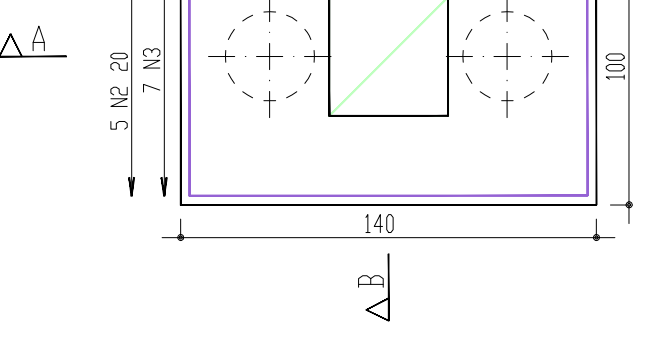
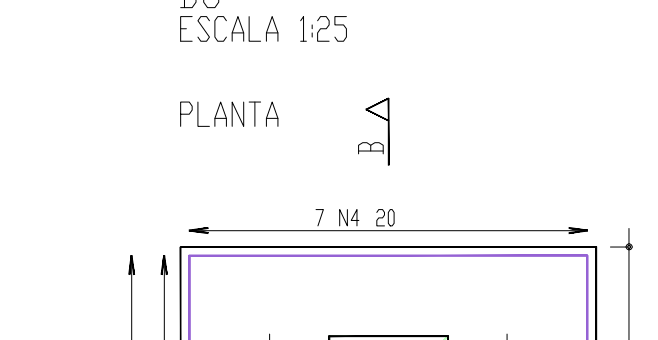
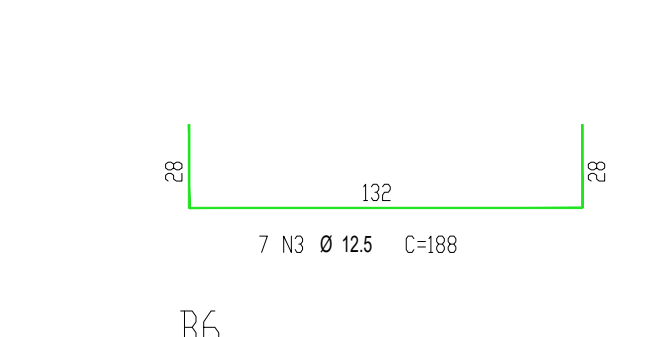
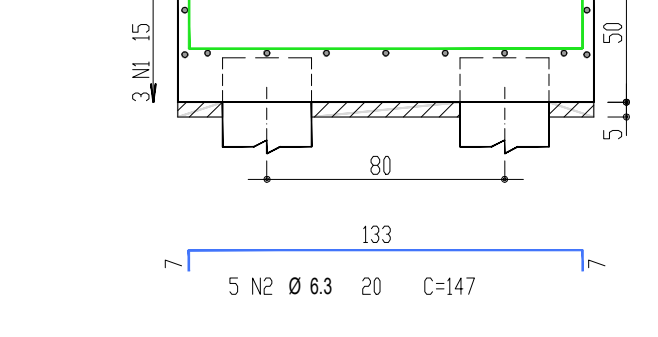
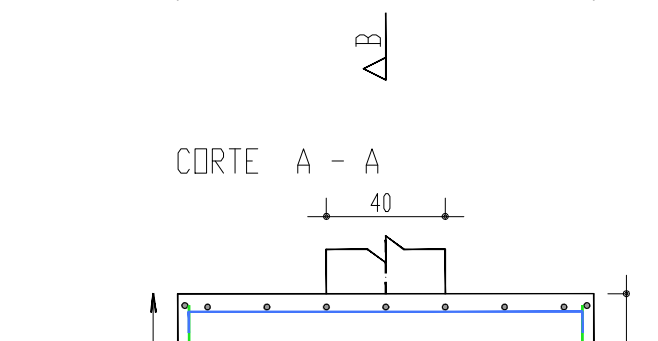
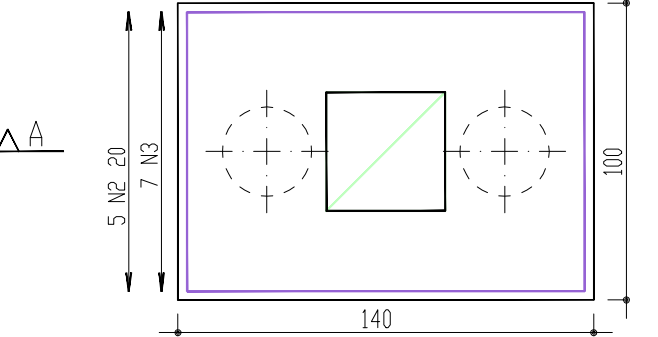
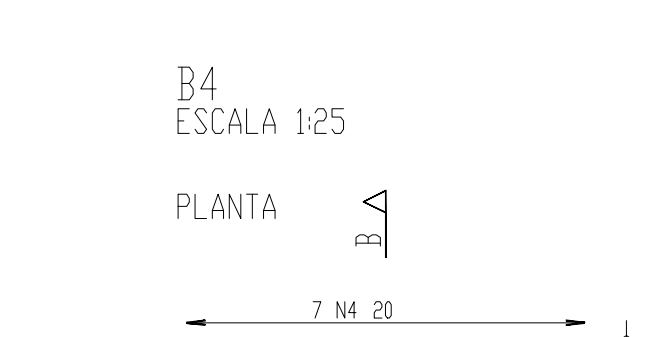
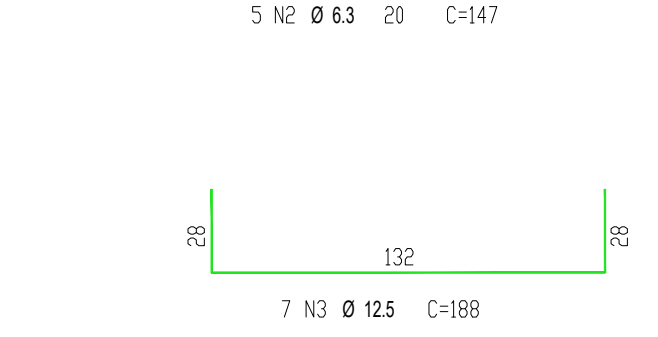
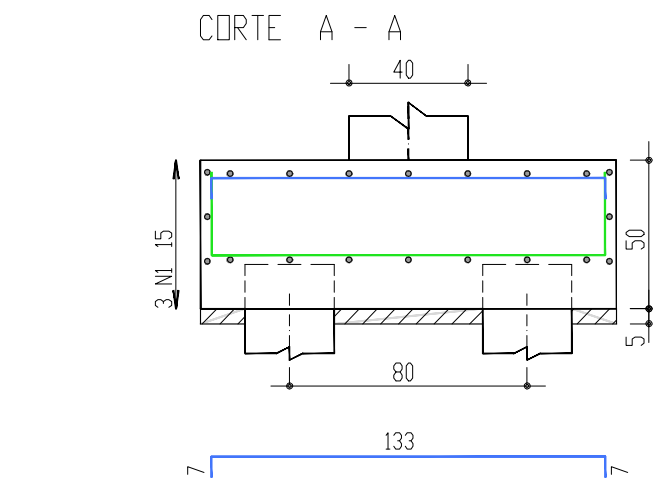
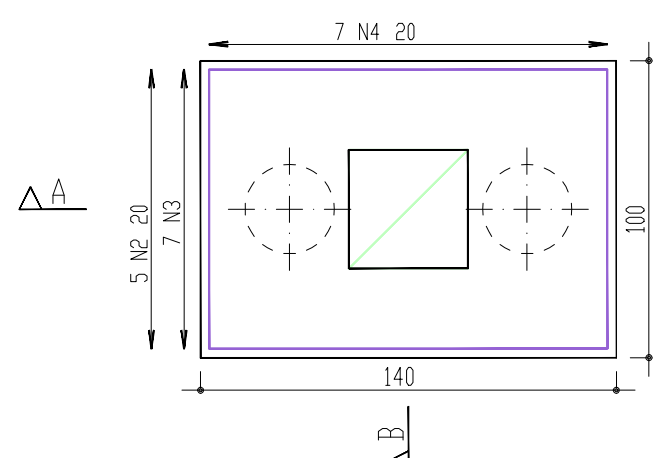
PLANTA



Detalhe de armadura de base Sem escala

B2 ESCALA 1:25

PLANTA

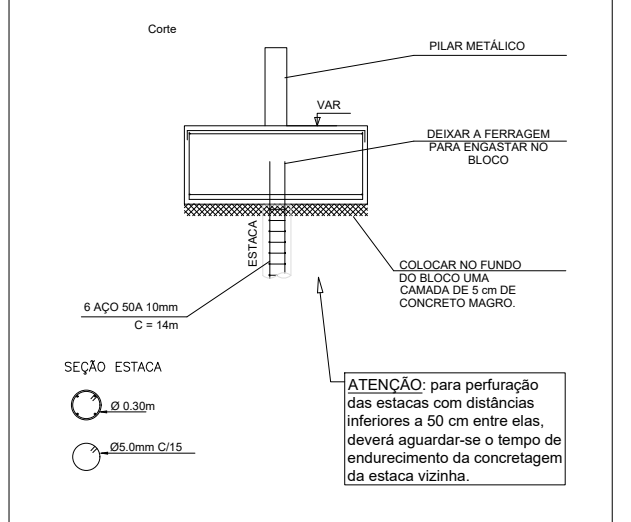


Detalhe de armadura de base Sem escala

AÇO	POS	BIT	QUANT	COMPRIMENTO	
				UNIT	TOTAL
B1	30A	8	3	474	1422
	30A	6,3	5	147	735
	30A	12,5	7	188	1316
	30A	6,3	7	256	1792
B2	30A	8	3	474	1422
	30A	6,3	5	147	735
	30A	12,5	7	188	1316
	30A	6,3	7	256	1792
B3	30A	8	3	474	1422
	30A	6,3	5	147	735
	30A	12,5	7	188	1316
	30A	6,3	7	256	1792
B4	30A	8	3	474	1422
	30A	6,3	5	147	735
	30A	12,5	7	188	1316
	30A	6,3	7	256	1792
B5	30A	8	3	474	1422
	30A	6,3	5	147	735
	30A	12,5	7	188	1316
	30A	6,3	7	256	1792
B6	30A	8	3	474	1422
	30A	6,3	5	147	735
	30A	12,5	7	188	1316
	30A	6,3	7	256	1792
EST30L15	30A	8	2	825	1650
	30A	6,3	2	400	800
	30A	12,5	2	400	800
	30A	6,3	2	400	800
V7	30A	8	2	825	1650
	30A	6,3	2	400	800
	30A	12,5	2	400	800
	30A	6,3	2	400	800

RESUMO DE AÇO			
AÇO	BIT	COMPR	PESQ
30A	8	2	825
30A	6,3	2	400
30A	12,5	2	400
30A	6,3	2	400
Peso Total 30A =			333 kgf
Concreto Fck 30MPa (bloco)			8,40 m³

DETALHE - ESTACAS GENÉRICO:



OBS:
As estacas devem possuir tamanho variável médio de 15,0 metros de profundidade conforme estudo de sondagem.
Diâmetro médio de 30 cm com concreto moldado in loco, sendo compostas por armação com 16 ferrões de aço S240 de 16mm.
O número de estacas por bloco é variável.

EST30L15

ESCALA 1:25

24x

6 N1 Ø 8 15

6 N1 Ø 8 15

6 N1 Ø 8 15

6 N1 Ø 8 15

6 N1 Ø 8 15

6 N1 Ø 8 15

6 N1 Ø 8 15

6 N1 Ø 8 15

6 N1 Ø 8 15

6 N1 Ø 8 15

6 N1 Ø 8 15

6 N1 Ø 8 15

6 N1 Ø 8 15

6 N1 Ø 8 15

6 N1 Ø 8 15

6 N1 Ø 8 15

6 N1 Ø 8 15

6 N1 Ø 8 15

6 N1 Ø 8 15

6 N1 Ø 8 15

6 N1 Ø 8 15

6 N1 Ø 8 15

6 N1 Ø 8 15

6 N1 Ø 8 15

6 N1 Ø 8 15

6 N1 Ø 8 15

6 N1 Ø 8 15

6 N1 Ø 8 15

6 N1 Ø 8 15

6 N1 Ø 8 15

6 N1 Ø 8 15

6 N1 Ø 8 15

6 N1 Ø 8 15

6 N1 Ø 8 15

6 N1 Ø 8 15

6 N1 Ø 8 15

6 N1 Ø 8 15

6 N1 Ø 8 15

6 N1 Ø 8 15

6 N1 Ø 8 15

6 N1 Ø 8 15

6 N1 Ø 8 15

6 N1 Ø 8 15

6 N1 Ø 8 15

6 N1 Ø 8 15

6 N1 Ø 8 15

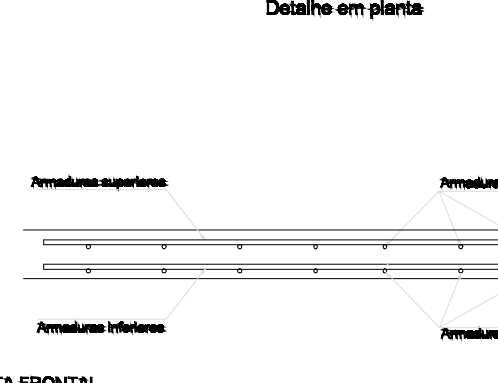
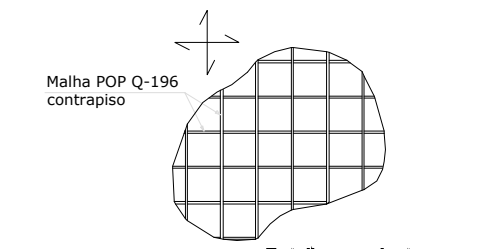
6 N1 Ø 8 15

6 N1 Ø 8 15

6 N1 Ø 8 15

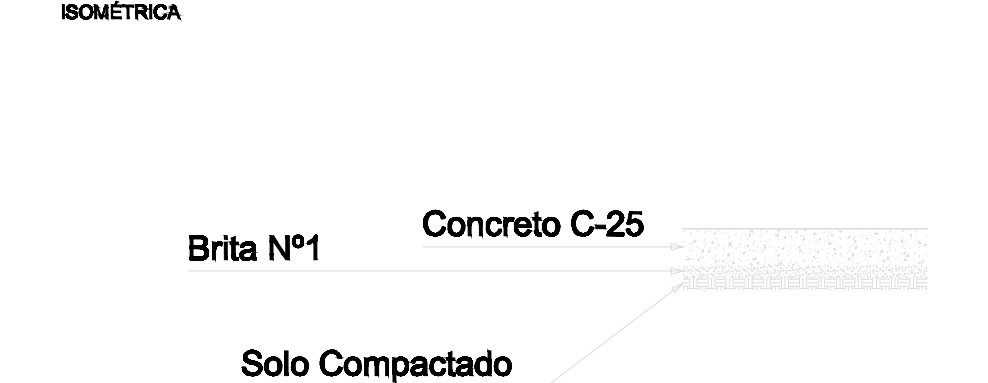
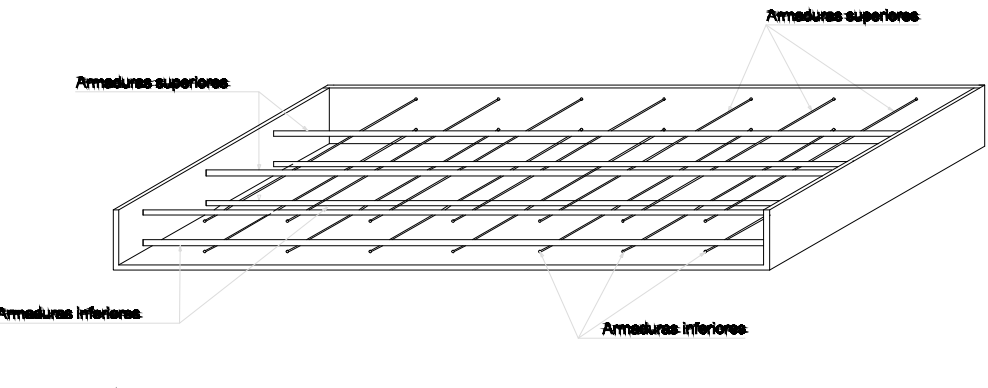
PISO - CONCRETO ARMADO

DETALHE DA ARMADURA DE MALHA BASE



Detalhe de armadura de base Sem escala

MONTAGEM DA ARMADURA DE DISTRIBUIÇÃO



Detalhe de armadura de base Sem escala

ARQUITETURA E ENGENHARIA

PROJETO ESTRUTURAL

PRAÇA COBERTA
RUA XV DE NOVEMBRO
MORRO DA FUMAÇA/SC

CONTEÚDO - PRAÇA
- Planta de Fundação
- Blocos
- Estacas

PRANCHAS:
01/03

PROPRIETÁRIO:
MUNICÍPIO DE MORRO DA FUMAÇA
CNPJ 83.000.323/0001-02

RESPONSÁVEL TÉCNICO:
HJ ARQUITETURA E ENGENHARIA LTDA
CREA-SC 187117-2

ESCALA: INDICADA

DESENHO: AMANDA

ÁREA TOTAL: 672,00

DATA: MARÇO/2028